

# The Designer



Association of  
Professional  
Landscape  
Designers

[www.apld.org](http://www.apld.org)

*The Designer* is a free quarterly publication of the Association of Professional Landscape Designers®

# Small Garden Gold Award

Andy Sturgeon

Andy Sturgeon Landscape and Garden Design, East Sussex, UK

The garden is designed as another room and as an extension to the kitchen. Following the interior design, the garden uses clean strong lines and rectangular shapes. The colors are light, bright and crisp and employ soft natural finishes. A variety of boundary treatments are used to create rhythm and interest within the design and to give the illusion of space. A circular recess in a white painted rendered wall creates a simple yet dramatic focal point.

Colored glass injects a shot of vibrant color into the scheme. Acrylic screens give the illusion of 'depth' which couldn't be achieved with a flat painted wall. Horizontal hardwood screens allow light and air circulation while creating a visual link with the decking and internal flooring.

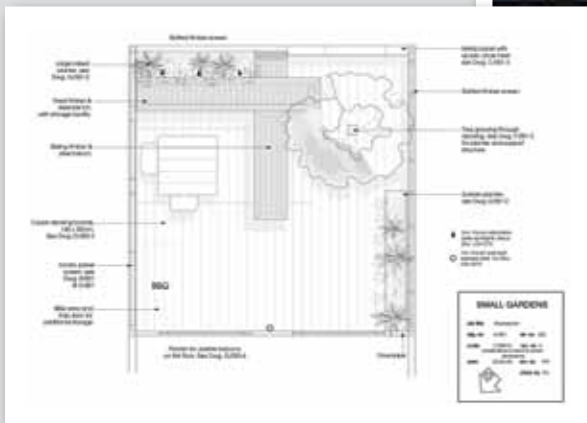
The planting is kept fairly minimal. It is restricted to a single species of bamboo set against the hardwood screen at the rear; the vertical stems contrasting with the horizontal slats. Shade is provided by a single tree with a clear stem. The canopy casts shade onto the dining area and the decking area beneath. The container is hidden from view beneath the decking.

The trunk of the tree is set against the circular recess in the wall, creating a strong visual element. The planter to the right of the tree contains other architectural species and culinary herbs. This planter is also hidden beneath the decking. Interlocking benches provide flexible seating and a structural element to the

garden. One bench is fitted to castors so that it can slide across to join the boundary wall. This makes the space more adaptable so that it can be opened up. The barbecue is hidden under a timber cowl. While the barbecue is being used, this slides across to provide a work surface.

A small free-standing table and two free-standing chairs offer flexible, movable seating. Wide cedar deck boards are treated to retain the original color and be of similar appearance to the internal floorboards.

Lighting is vital to the entire scheme and is on several circuits with a simple remote control for maximum flexibility. The acrylic panels are up-lit from the base to create a glowing wall. The tree is spot-lit from underneath focusing on the trunk and bouncing ambient light back onto the deck. The planting is also illuminated at the base silhouetting the outlines against the slatted screen behind. The circular recess in the white wall is also backlit with the tree trunk silhouetted against it.



## Judges' comments:

*A slick and clean design. Very good choice of materials working extremely well together. Excellent detail and lighting.*



# Specialty Projects Gold Award

Andy Sturgeon

Andy Sturgeon Landscape and Garden Design, East Sussex, UK



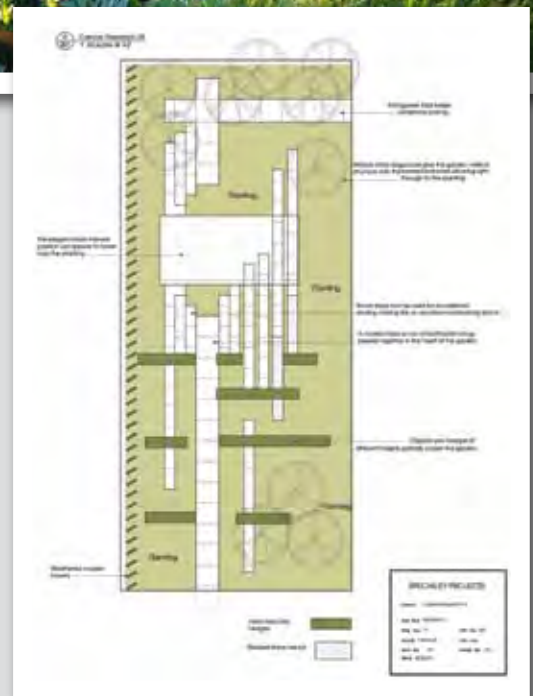
**Judges' comments:** *An exciting and sculptural space with a great sense of style and dynamism. The wooden sculpture provides a welcome contrast to all the orthogonal forms.*

The Cancer Research UK show garden at the RHS Chelsea Flower Show 2007 highlighted their vision of "Together we will beat cancer." Primarily, the garden uses natural materials and the architectural structure is then complemented and enhanced by textural and colorful planting. Wide pale limestone paths lead from either end of the garden, drawing people together in its heart. The informal rectangular amphitheatre has stacked stone benches and numerous steps and changes in level which provide flexible seating, ideal for entertaining while allowing people to gather together.

The elegant minimalist pavilion gives a nod to contemporary Japanese architecture and offers shelter from the rain and some shade from the sun while framing the view through to the rear of the garden. The 'Together' sculpture, also designed by Andy Sturgeon, is a sharply contrasting organic element which twists through the space bringing an energy and vitality

to the garden. Three 30-meter long ribbons of steamed oak intertwine and weave together linking and embracing all the various elements with their gentle curves. The sculpture culminates at the back of the garden where it plunges into the ground before rising up through the branches of a mature tree.

The backdrop to the garden is a series of rich brown weathered copper louvers providing a foil to the soft greens of the planting in front. As the sun moves round the sky they throw plants alternately into light and shadow. The planting features seven stately *Cornus controversa*, the majestic table dogwood whose distinct layered branches allow light to penetrate through to the planting beneath. Structural yew hedges slice through the garden at different heights with each hedge forming a green backdrop



to the more colorful planting in front while dividing the garden into numerous areas, ensuring that the entire garden cannot be viewed from any one place and encourages visitors to explore.

Note: The Cancer Research UK Garden was entirely funded by the generosity of a private donor.



---

# 2 0 1 0

---

## international landscape design awards

---

The APLD International Landscape Design Awards Program honors the best in landscape design from around the world. The program brings exceptional talent to the attention of peers, potential clients and the world of design.

The Awards Committee of APLD reviews and modifies the program yearly to improve quality. This year the category of Show Gardens has been created to highlight work that often is more cutting edge. Other entry categories are residential, non-residential, small gardens, planting design and specialty projects.

We encourage you to enter your exceptional projects which will be evaluated by a distinguished international jury. We again thank the 2009 judges – Norman Booth, C. Colston Burrell, Gregory Pierceall, Robin Templar Williams, APLD, and Andrew Wilson.

The best entries will receive a gold award. Other deserving entries will receive a merit award. There can be more than one gold or merit in each category. This places the entrants in competition within the bar of excellence, as opposed to competition within a pool of entries.

Award recipients receive featured coverage in *The Designer*, extensive public relations dissemination and will be honored at the APLD Awards banquet in Dallas, Texas, in September 2010.

The 2010 deadline for entry to the Awards Program is February 1, 2010.

### **APLD Awards Committee**

Andrew Fisher-Tomlin, FSGD  
William Healy, APLD  
Amelia Lima, APLD  
Rosalind Reed, APLD